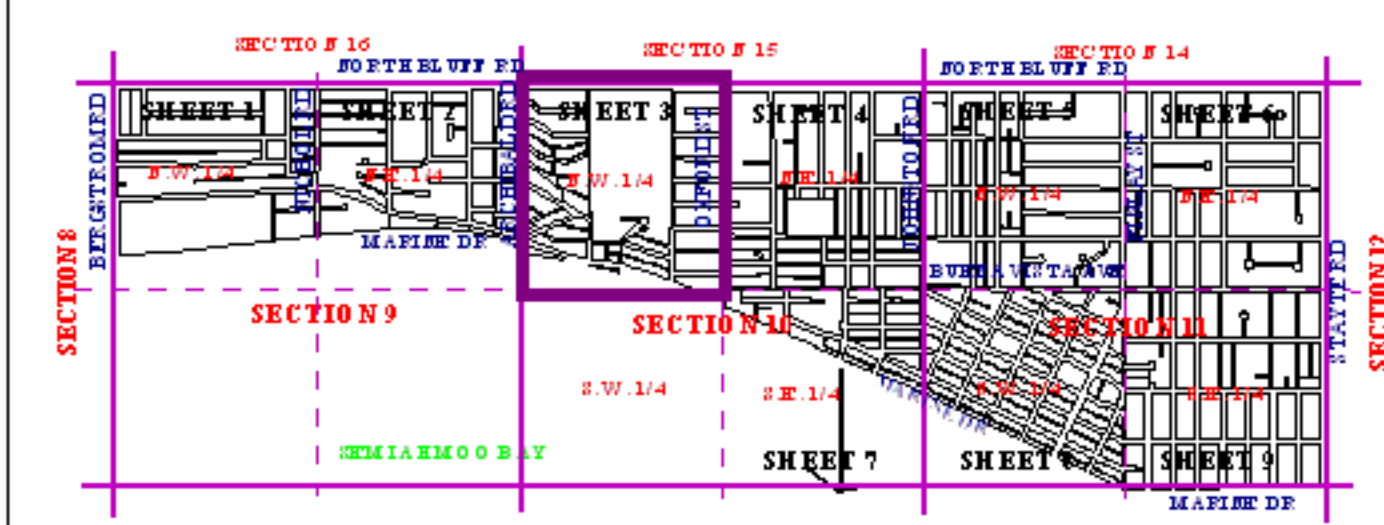
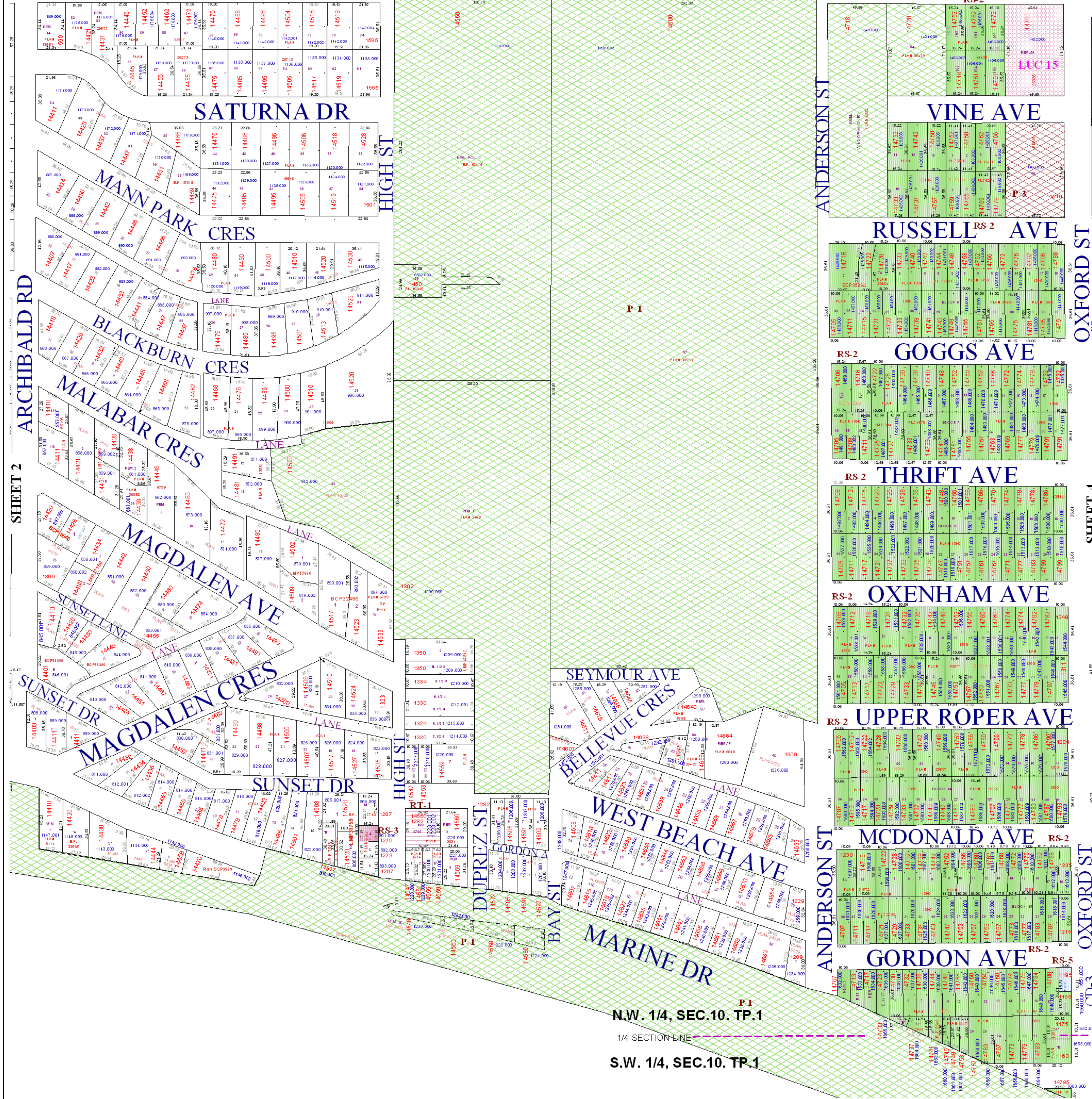


NORTH BLUFF RD



**Zone map**  
 adopted by City Council September 27, 1999  
 Schedule A - Bylaw No. 1591  
*The Corporation of  
 the City of White Rock*

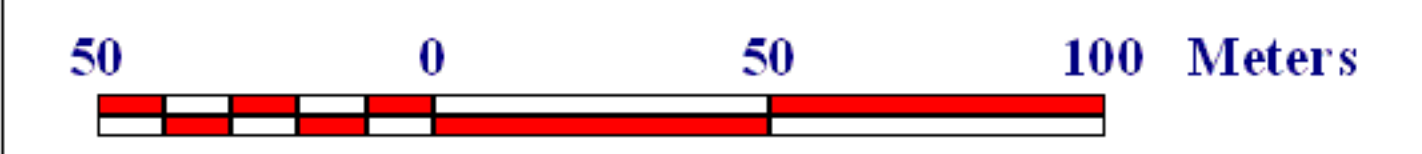
NORTH WEST QUARTER SECTION 10, TOWNSHIP 11

**ZONES:**

- COMMERCIAL**
  - CR-1 local commercial zone
  - CR-2 marine drive commercial zone
  - CR-4 waterfront commercial zone
  - CR-5 town centre high density mixed commercial / residential zone
  - CR-7 town centre medium density mixed commercial / residential zone
  - CR-8 public house commercial zone
  - CS-1 service commercial zone
  - CS-2 service station commercial zone
  - CS-3 tourist commercial zone
- INSTITUTIONAL**
  - P-1 civic institutional zone
  - P-2 special institutional zone
  - P-3 special institutional - assembly zone
  - P-4 special institutional - personal care zone
  - P-6 special institutional - assisted living - multi-unit residential lowrise zone
- RESIDENTIAL**
  - RS-1 one unit residential zone
  - RS-2 one unit residential zone (small lot)
  - RS-3 one unit residential zone (hill side)
  - RS-4 one unit residential zone (estate)
  - RS-5 bed and breakfast residential zone
  - RS-6 one unit large lot residential zone
  - RS-7 one unit infill residential
  - RT-1 two-unit residential zone
  - RM-1 low density multi-unit residential zone
  - RM-2 medium-density apartment residential zone
  - RM-3 high-density apartment residential zone
  - RM-4 marine drive low density apartment residential zone
  - RM-5 marine drive medium-density apartment zone
- LUC**
  - LUC land use contracts zone
- CD**
  - CD comprehensive development zone



Scale 1 : 1 500



Last Revised: Jan 13, 2009