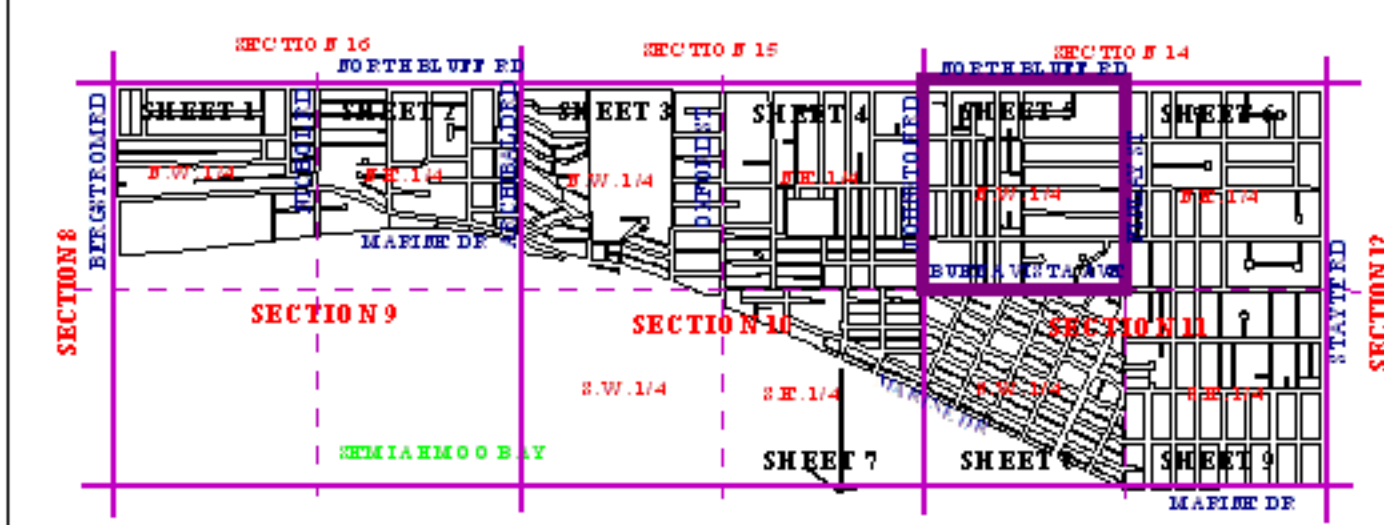
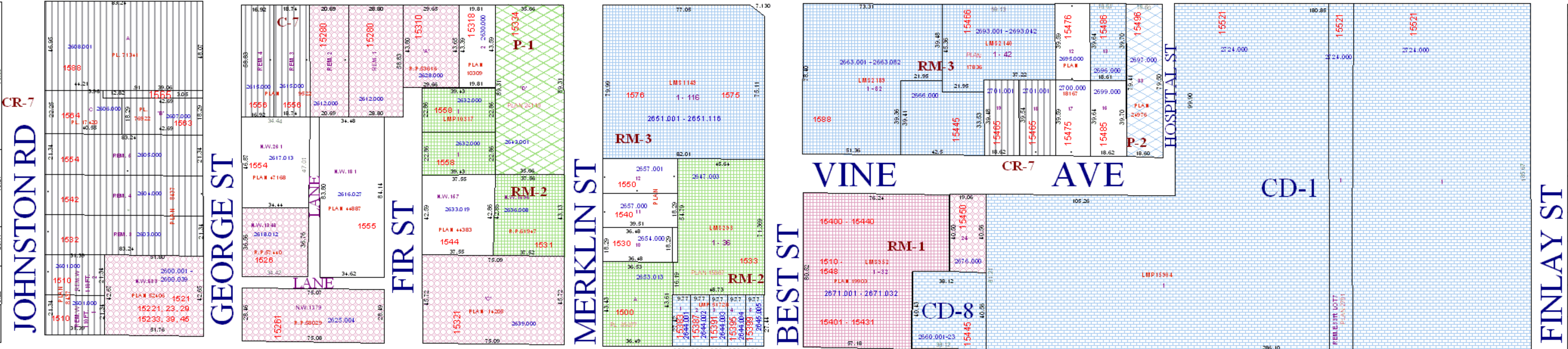
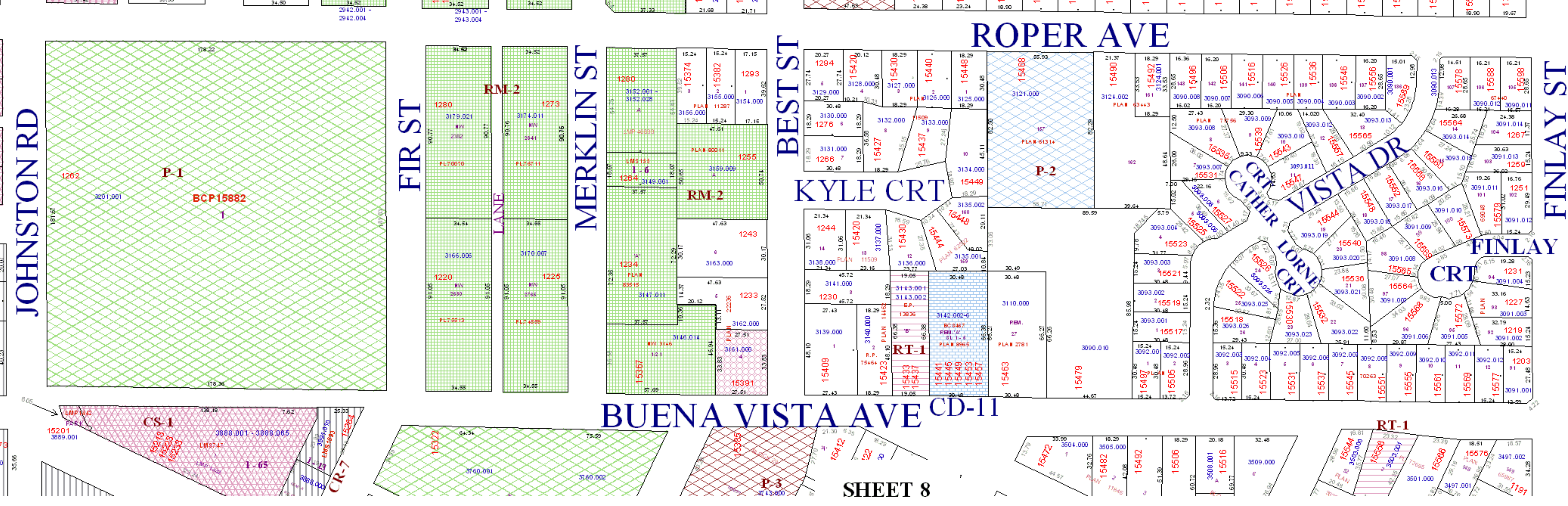
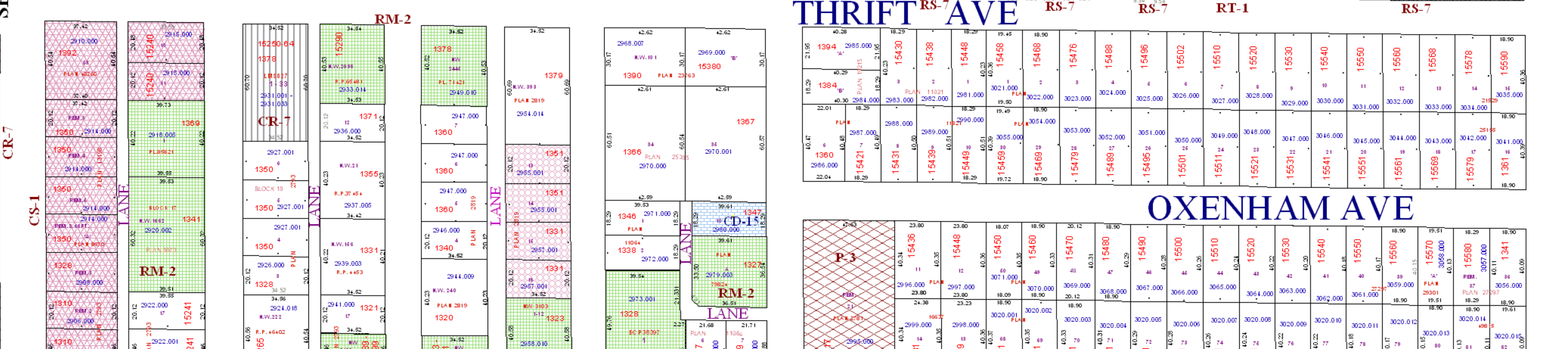
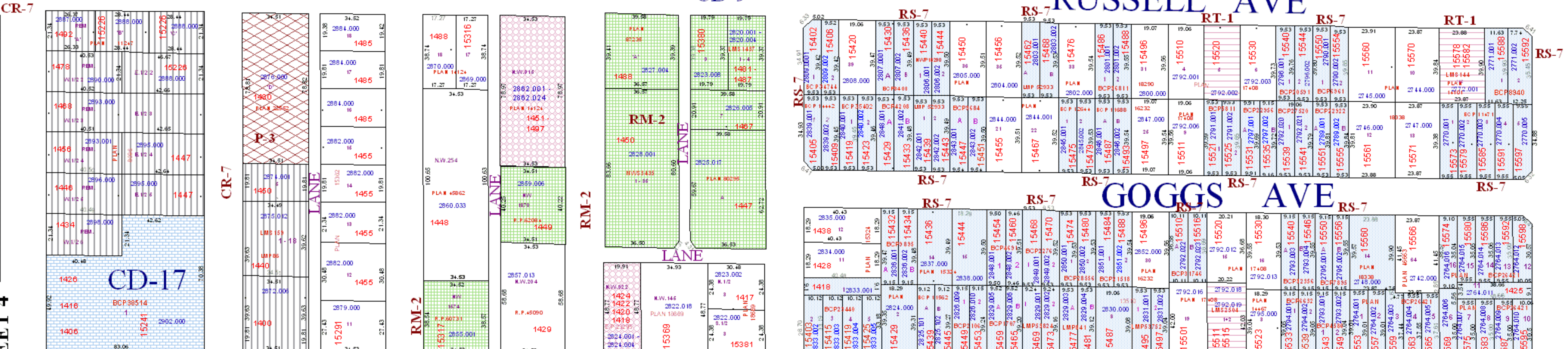


NORTH BLUFF RD

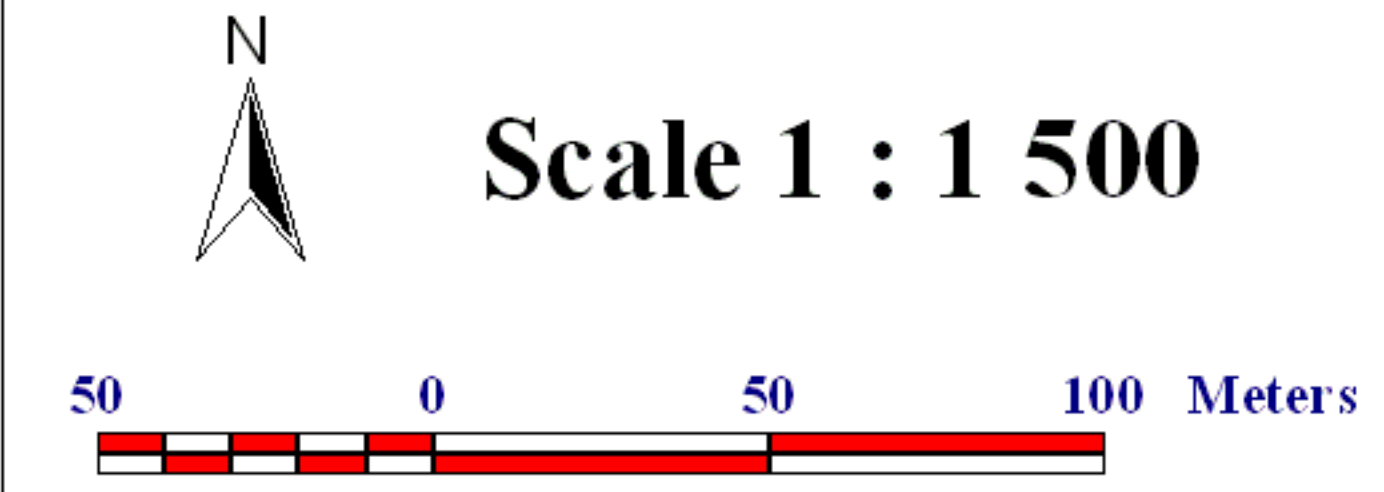


Zone map
 adopted by City Council September 27, 1999
 Schedule A - Bylaw No. 1591
*The Corporation of
 the City of White Rock*

NORTH WEST QUARTER SECTION 11, TOWNSHIP 11



- ZONES:**
- COMMERCIAL**
 - CR-1 local commercial zone
 - CR-2 marine drive commercial zone
 - CR-3 waterfront commercial zone
 - CR-5 town centre high density mixed commercial / residential zone
 - CR-7 town centre medium density mixed commercial / residential zone
 - CR-8 public house commercial zone
 - CS-1 service commercial zone
 - CS-2 service station commercial zone
 - CS-3 tourist commercial zone
 - INSTITUTIONAL**
 - P-1 civic institutional zone
 - P-2 special institutional zone
 - P-3 special institutional - assembly zone
 - P-4 special institutional - personal care zone
 - P-6 special institutional - assisted living - multi-unit residential lowrise zone
 - RESIDENTIAL**
 - RS-1 one-unit residential zone
 - RS-2 one-unit residential zone (small lot)
 - RS-3 one-unit residential zone (hill side)
 - RS-4 one-unit residential zone (estate)
 - RS-5 bed and breakfast residential zone
 - RS-6 one-unit large lot residential zone
 - RS-7 one-unit infill residential
 - RT-1 two-unit residential zone
 - RM-1 low density multi-unit residential zone
 - RM-2 medium-density apartment residential zone
 - RM-3 high-density apartment residential zone
 - RM-4 marine drive low-density apartment residential zone
 - RM-5 marine drive medium-density apartment residential zone
 - LUC**
 - LUC land use contracts zone
 - CD**
 - CD comprehensive development zone



Scale 1 : 1 500

Last Revised: Jan 13, 2009